

# AGD 645

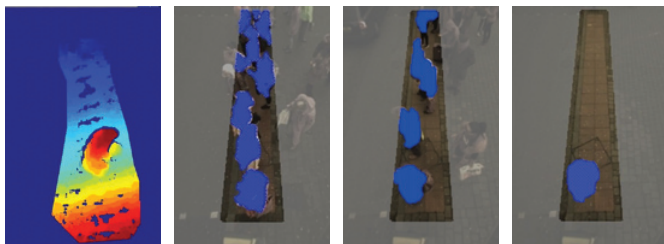
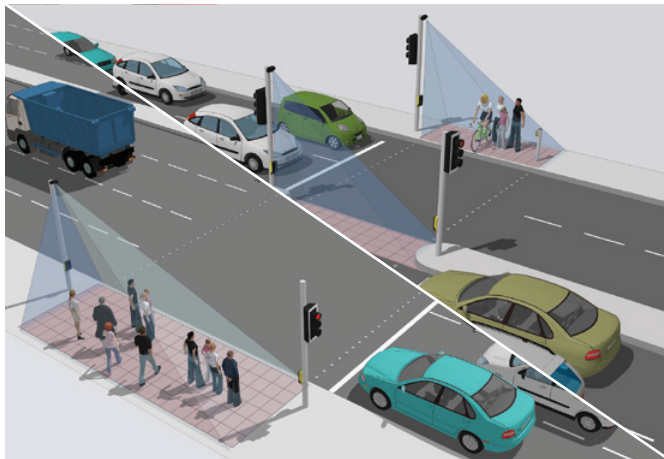
## PEDESTRIAN DETECTOR

The AGD 645 Pedestrian Detector is a smart, optical, dynamic environment detector that makes crossings safer and more efficient by delivering robust Volumetrics Data within large 10m x 3m zones. Multiple units integrate to cover 'super-crossings'.

It is a high-performance product that processes information on board with new chip-set and sophisticated algorithms for automated decision-making to provide ultra-reliable detection.

The AGD 645 employs 3D HD stereo-optics to detect stationary & moving targets over a large 10m x 3m zone and provides Volumetrics Data in the form of percentage occupancy. It has an outstanding capability to detect people while rejecting shadows, litter and leaves and small objects such as birds walking through the zone.

The platform covers the needs of 'Smart City' systems with: IP, POE, Volumetrics and real-time video capabilities which allow the 645 to feed data and pictures 'down the wire' straight into ITS control rooms - empowering truly informed dynamic decision-making.



### Features

- 10m x 3m zone - save on infrastructure costs
- AGD 3D HD stereo-vision - down to min 15 lux
- Volumetrics – dynamic data for high efficiency
- WiFi AGD Touch-setup - speeds installation & reduces risk
- Quick-mask tool - easy zone selection
- IP & Real-time video - instant information for improved safety

### AGD Volumetric

DYNAMIC ENVIRONMENT DETECTION

#### Traffic & Pedestrian Control



*safer, greener, more efficient*

# AGD 645

## PEDESTRIAN DETECTOR

### AGD Touch-setup

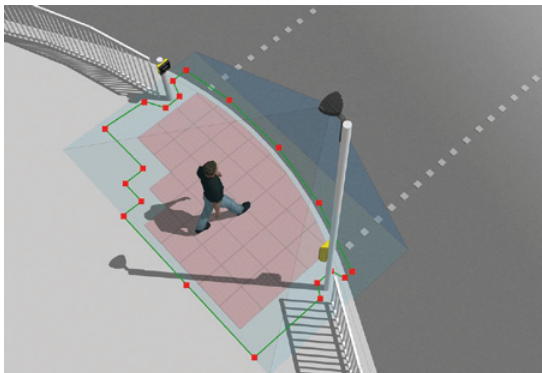
WIFI 3-CLICK TOUCH-SETUP

#### WiFi AGD Touch-Setup with Quick-mask 'zone' Tool

The 645 is quick to setup using any WiFi device - smart-phone, tablet or laptop - with its unique & secure AGD Touch-setup that allows installers to configure the device in three simple steps:

1. Name device
2. Select zone & Volumetrics
3. Click to calibrate

Multiple AGD detectors may be setup at the same time from a safe position on the ground, or in a vehicle up to 100m away. Conveniently, the AGD 645 can be adjusted for zone changes just as quickly in the same way.



AGD Quick-mask 'zone' tool

The smart AGD 645 provides even greater performance over a much larger area than its partner product, the exceptional AGD640 which is used on over 15,000 sites worldwide providing reliable detection for pedestrians and cyclists.

The IP capable AGD645 is the ideal

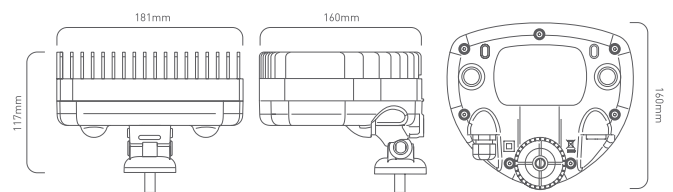
**AGD Volumetric**  
DYNAMIC ENVIRONMENT DETECTION

detection solution for larger kerbside and wait zones - particularly where efficiency enhancing Volumetrics Data in the form of percentage occupancy is required.

#### Product Specification

<b>Description</b>	Pedestrian Detector
<b>Technology</b>	AGD 3D HD Optical Stereo Vision
<b>Detection Zone</b>	10m x 3m (Polygonal Mask Set-up)
<b>Mounting Height</b>	3-6m Nominal
<b>Power Supply</b>	24V AC/DC
<b>Power</b>	8.0W @ 24V AC/DC (330mA)
<b>Detect Output</b>	Single Opto / IP Ready
<b>LED Indication</b>	Front LEDs for detect and WiFi connection
<b>Real-time Video</b>	Yes
<b>Housing Material</b>	Black Polycarbonate / Aluminium
<b>Sealing</b>	IP65
<b>Operating Temp</b>	-20°C to +60°C
<b>Configuration</b>	WiFi AGD Touch-Setup
<b>Lux Level</b>	Below 15 lux an infrared illuminator such as a Raytec VAR-12-1 is recommended
<b>Dimensions</b>	W 181mm x D 160mm x H 117mm
<b>Weight</b>	1400g
<b>Complies with</b>	BS EN 50293, BS EN62368, Type Approval Ref: AGD AP601113
<b>Patent No.</b>	GB 2448617

#### Dimensions



#### Tested and AGD Certified

All AGD products are Tested, Calibrated and AGD Certified so customers know that all devices will perform exactly as described.

