

# AGD645

## Pedestrian Detector

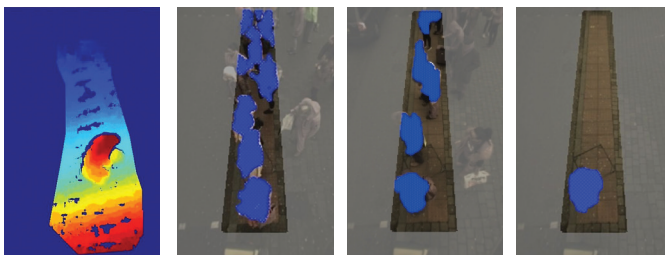


**The AGD645 Pedestrian Detector is a smart, optical, dynamic environment detector that makes crossings safer and more efficient by delivering robust Volumetrics Data within large 10m x 3m zones. Multiple units integrate to cover 'super-crossings'.**

It is a high-performance product that processes information on board with new chip-set and sophisticated algorithms for automated decision-making to provide ultra-reliable detection.

The AGD645 employs 3D HD stereo-optics to detect stationary & moving targets over a large 10m x 3m zone and provides Volumetrics Data in the form of percentage occupancy. It has an outstanding capability to detect people while rejecting shadows, litter and leaves and small objects such as birds walking through the zone.

The platform covers the needs of 'Smart City' systems with: IP, POE, Volumetrics and real-time video capabilities which allow the 645 to feed data and pictures 'down the wire' straight into ITS control rooms – empowering truly informed dynamic decision-making.



## KEY FEATURES

- 10m x 3m zone – save on infrastructure costs
- AGD 3D HD stereo-vision – down to min 15 lux
- Volumetrics – dynamic data for high efficiency
- WiFi AGD Touch-setup – speeds installation & reduces risk
- Quick-mask tool – easy zone selection
- IP & Real-time video – instant information for improved safety

# AGD645

## Pedestrian Detector

### AGDTOUCH

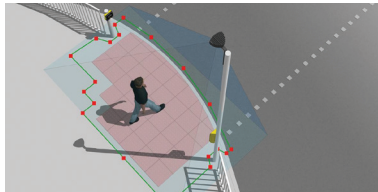
WiFi 3 Click Setup

#### WiFi AGD TOUCH-SETUP WITH QUICK-MASK 'ZONE' TOOL

The AGD645 is quick to setup using any WiFi device – smart-phone, tablet or laptop – with its unique & secure AGD Touch-setup that allows installers to configure the device in three simple steps:

1. Name device
2. Select zone & Volumetrics
3. Click to calibrate

Multiple AGD detectors may be setup at the same time from a safe position on the ground, or in a vehicle up to 30m away. Conveniently, the AGD645 can be adjusted for zone changes just as quickly in the same way.



AGD Quick-mask 'zone' tool

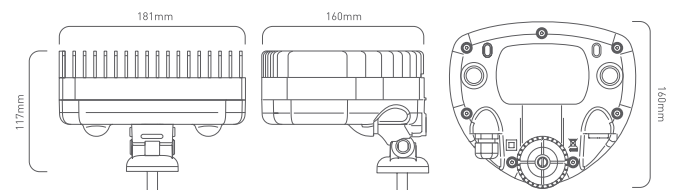
The smart AGD645 provides even greater performance over a much larger area than its partner product, the exceptional AGD640 which is used on over 15,000 sites worldwide providing reliable detection for pedestrians and cyclists.

The IP capable AGD645 is the ideal detection solution for larger kerbside and wait zones – particularly where efficiency enhancing Volumetrics Data in the form of percentage occupancy is required.

#### PRODUCT SPECIFICATION

Description	Pedestrian Detector
Technology	AGD 3D HD Optical Stereo Vision
Detection Zone	10m x 3m (Polygonal Mask Set-up)
Mounting Height	3-6 Nominal
Power Supply	24V AC/DC
Power	8.0 @ 24V AC/DC (330mA)
Detect Output	Single Opto / IP Ready
LED Indication	Front LEDs for detect and WIFI connection
Real-time Video	Yes
Housing Material	Black Polycarbonate / Aluminium
Sealing	IP65 & NEMA 250 4X
Operating Temp	-34°C to +74°C
Configuration	WiFi AGD Touch Setup
Lux Level	Below 15 lux an infrared illuminator such as a Raytec VAR-12-1 is recommended
Dimensions	W 181mm x D 160mm x H 117mm
Weight	1400g
Complies With	EMC: BS EN 50293:2012, EN 301 489-17, EN 301 489-1 Health & Safety: BS EN 62368, EN 60950-22, EN 50556, EN 62311 Spectrum: EN 300 328 RoHS: EN 50581 Other: TOPAS 2507A, NEMA TS 2 2016
Patent No.	GB 2448617

#### DIMENSIONS



#### TESTED AND AGD CERTIFIED

All AGD products are Tested, Calibrated and AGD Certified so customers know that all devices will perform exactly as described.

**AGD**®  
AUSTRALASIA

SAFER  
GREENER  
MORE EFFICIENT

#### AGD Systems Pty Ltd

U 17/15 Valediction Road  
Kings Park, NSW 2148

Tel: +61 (0) 2 9653 9934

Email: Admin@agd-systems.com.au

Web: agd-systems.com.au